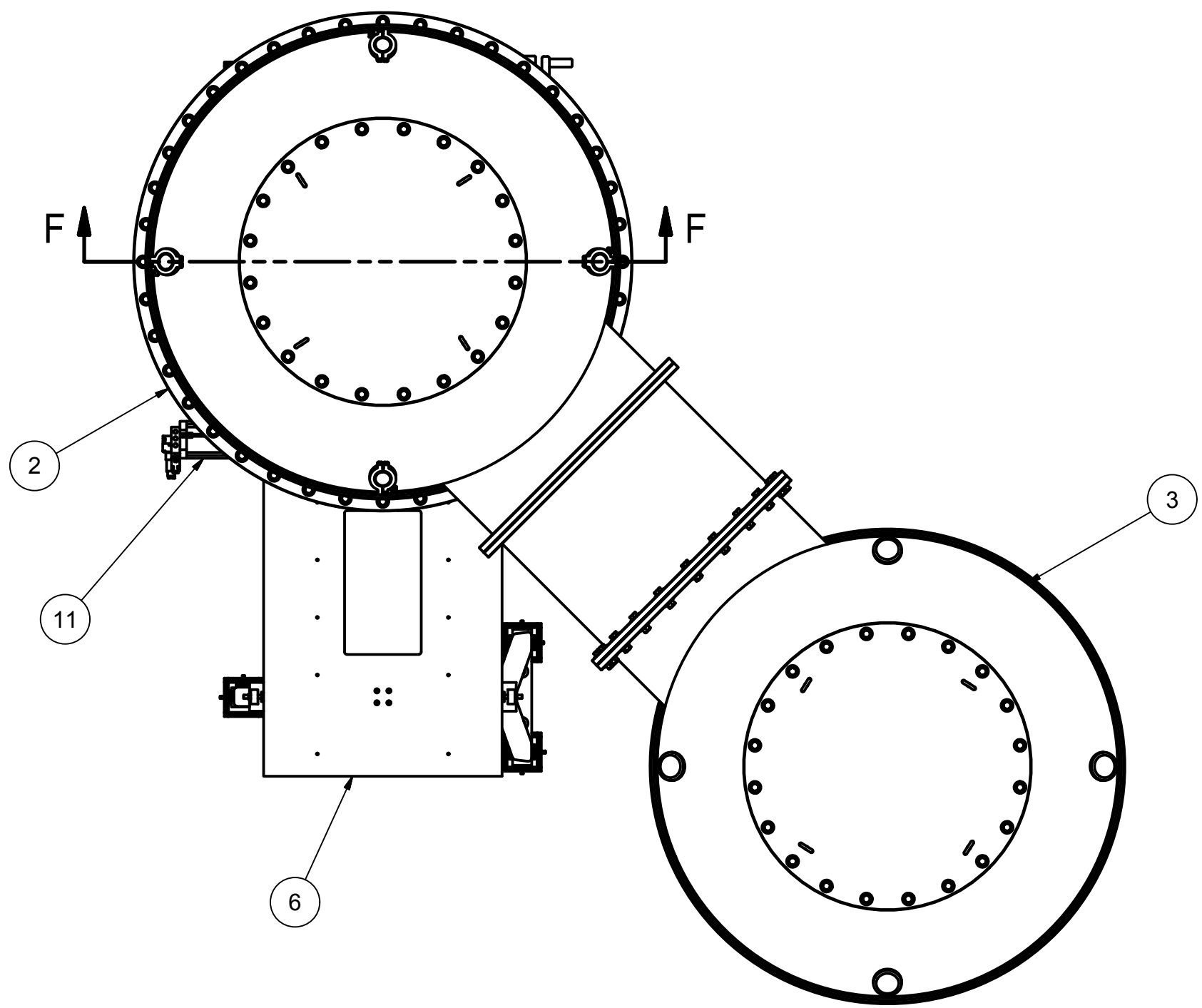

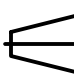


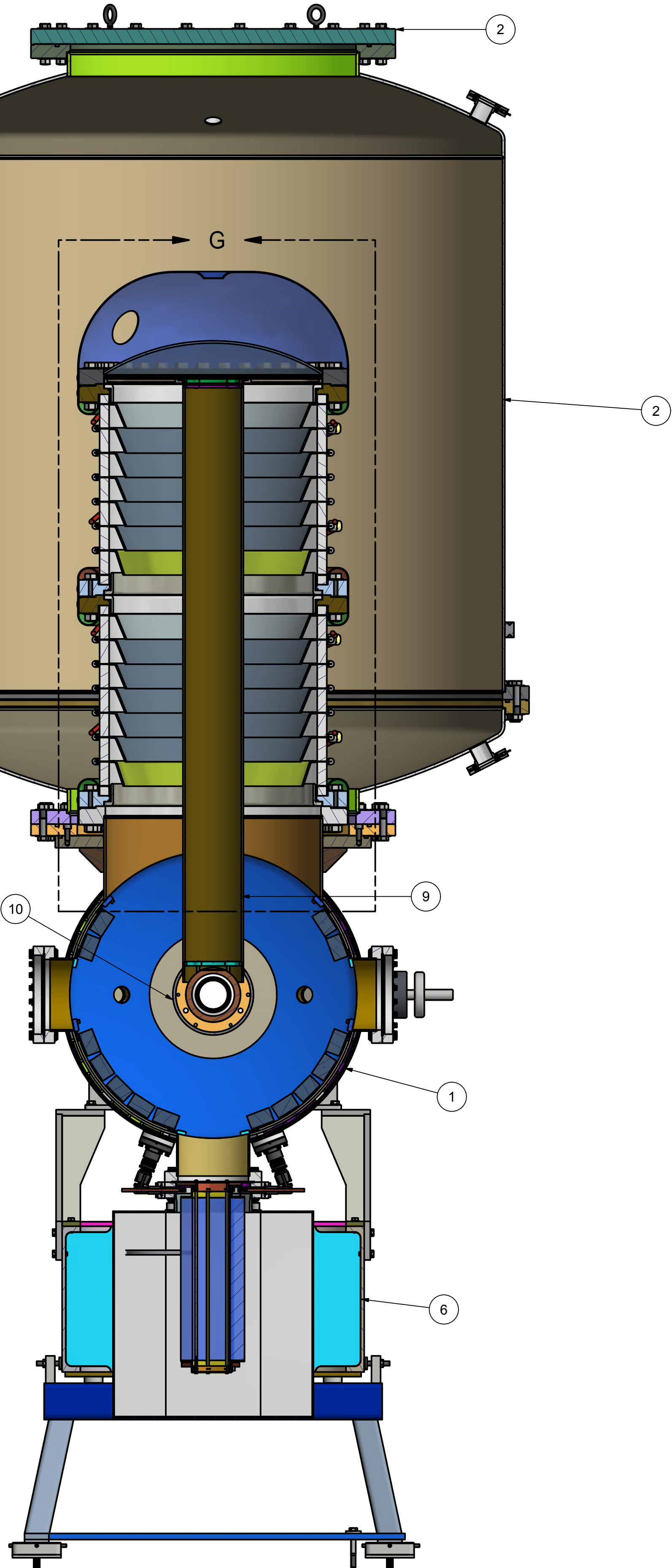


REVISIONS				
SYM.	ZONE	DESCRIPTION	DATE	APP.

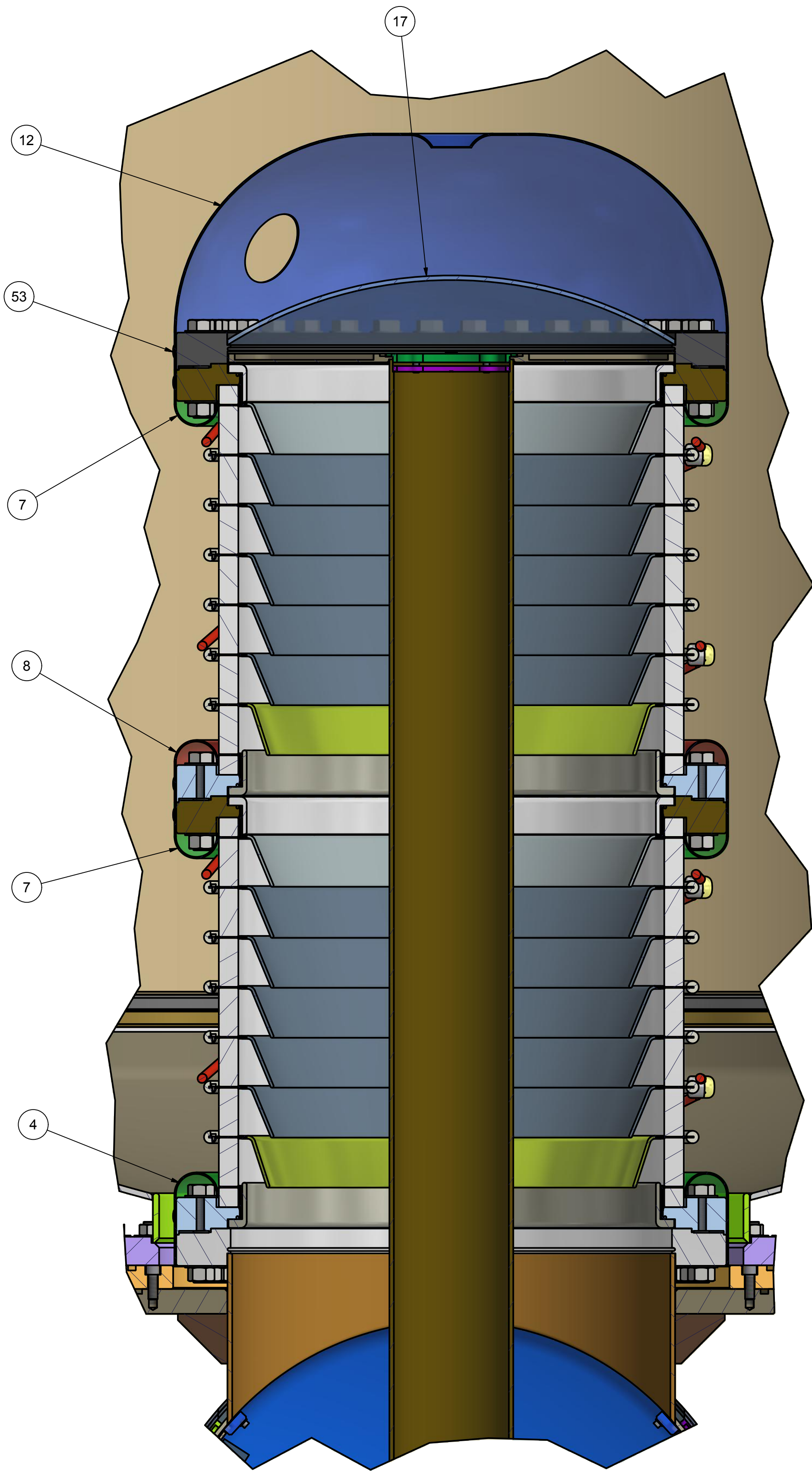


57	7101-153	Gun Resistor Bracket	1					
56	Purchased	Long 8 Bolt Plate Set	1				KJ Lesker	
55	Purchased	Hex Bolt - 3/8-16 UNC - 1	8				McMaster Carr	
54	Purchased	Plain Washer 3/8	8				McMaster Carr	
53	Purchased	Button Head Screw 3/8-24 - 1/2	30				McMaster Carr	
52	Purchased	Hex Nuts - 5/8 - 18	72				McMaster Carr	
51	Purchased	Hex Bolt - 5/8-18 UNF - 3.5	72					
50	Purchased	Washer - 5/8	144				91950A035	
24	Purchased	Type 48 Manual Valve 4500	1				VAT	
23	7101-125	???	1					
17	Purchased	WSFB22X000FD	1				KJ Lesker	
16	7101-104	Gun Insulator Assembled	1					
14	7101-123	PE Ion Pump with NEG Insert	1					
12	7101-106 Sh. 4	Ceramic Top Dome	1					
11	7101-124	Gun Anode Fixed Gap	1					
10	7101-102	Gun Electrode Sturcture	1					
9	7101-109 C	HV Support Stalk	1					
8	7101-106 Sh. 2	Midpoint Tall Corona Ring	2					
7	7101-106 Sh. 2	Midpoint Corona Ring	4					
6	7111-007	Mk II Gun Support Girder	1					
4	7101-106 Sh. 2	Lower Gun Tank Corona Ring	2					
3	7101-117	SF6 Pressure Vessel - HVPS	1					
2	7101-257	SF6 Pressure Vessel - Mk II Gun	1					
1	7101-103	Gun Assembled Vacuum Chamber	1					

 		ITEM	DWG. NO.	DESCRIPTION			G1	G2	G3	REMARKS		REV.
						QUANTITY						
D	PRINT DISTR.	PLOT DATE: 10/18/2012 CAD FILE NAME: 7101-106.idw										
		CR-1	UNLESS OTHERWISE SPECIFIED:  DIMENSIONS ARE IN INCHES; TOLERANCES ON: .0 ± .02 .00 ± .010 .000 ± .005 FRACTIONS ± 1/32 ANGLES ± 0.5° ALL SURFACES 		 CORNELL UNIVERSITY Floyd R. Newman Laboratory Ithaca, NY 14853							
					Mk. II Gun Assembly							
	CHECKED BY:	DRAWN BY		DRAWN FOR		DATE		SCALE	D	7101-106	REV.	
	APPROVED BY:	KWS		BMD		7/28/2011						
7101-106 SH. NO. 1 OF 6		SH. NO. 1 OF 6										

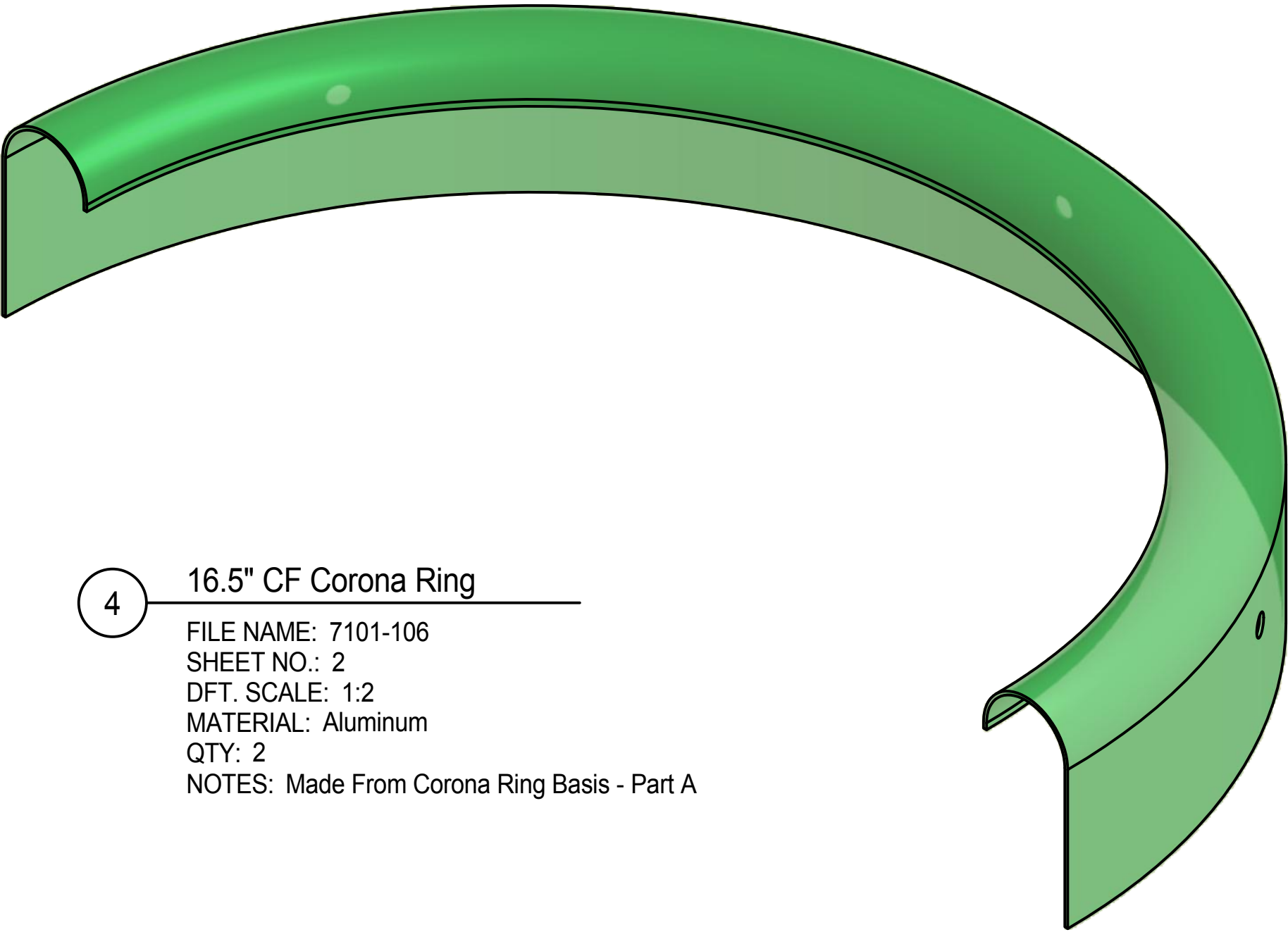


SECTION F-F  
SCALE .15

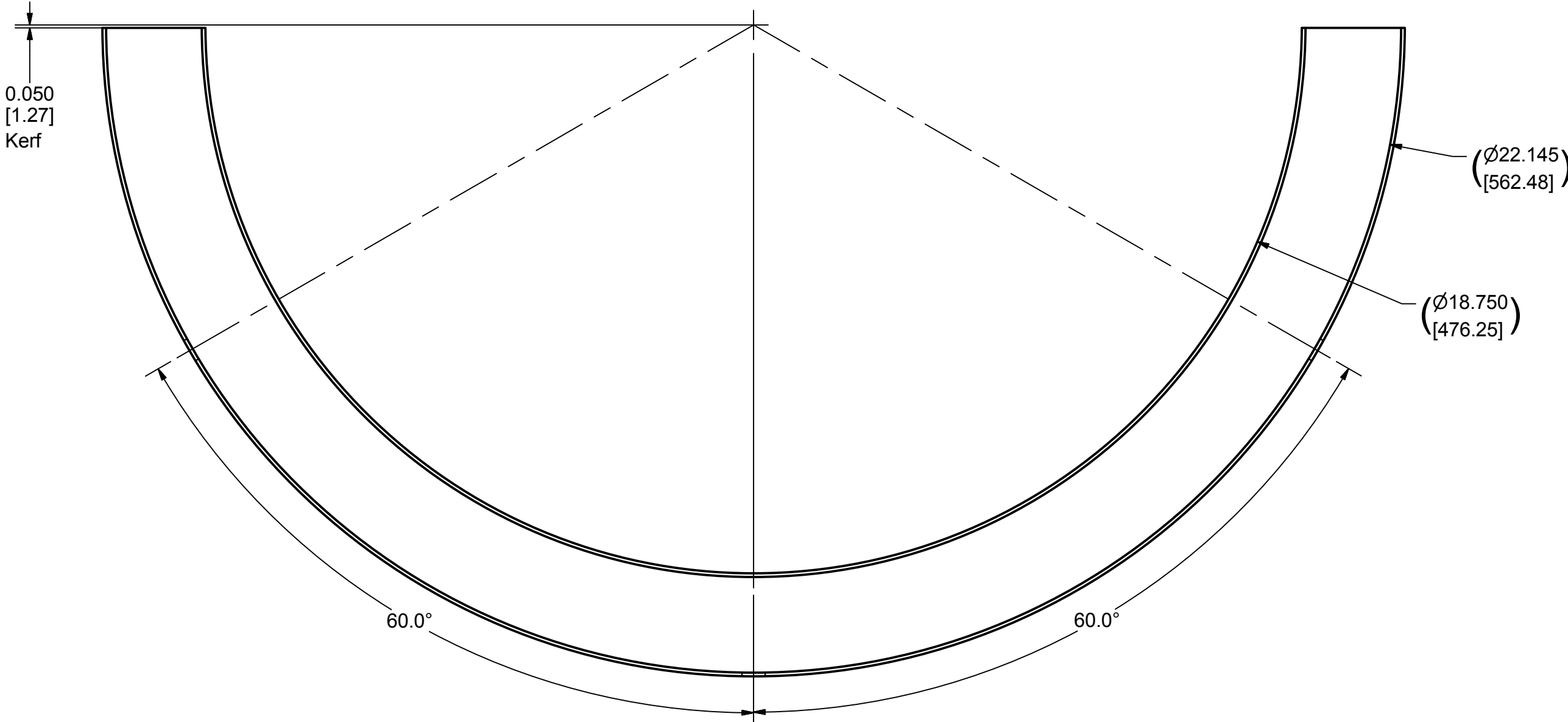
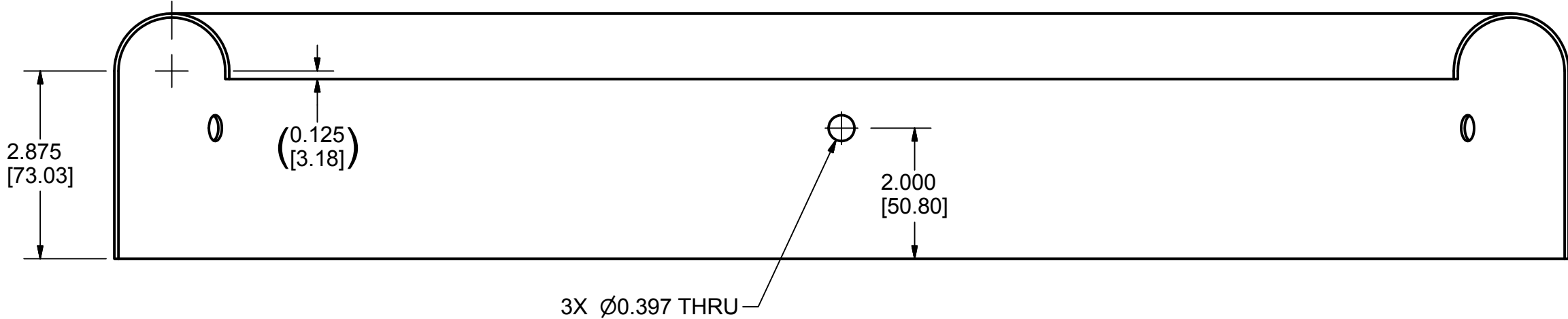


DETAIL G  
SCALE 0.30 : 1

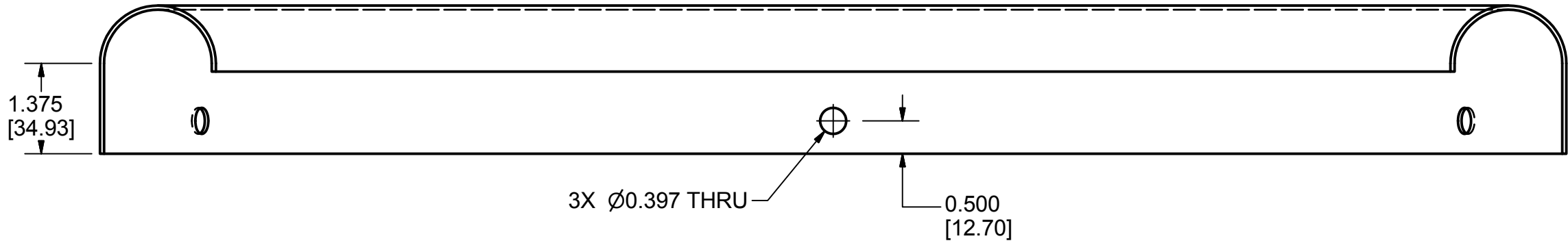
REVISIONS				
SYM.	ZONE	DESCRIPTION	DATE	APP.



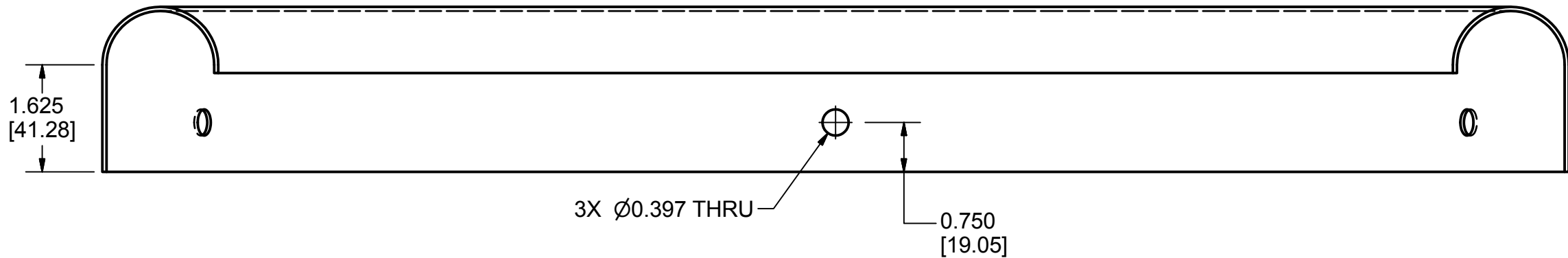
4 16.5" CF Corona Ring  
FILE NAME: 7101-106  
SHEET NO.: 2  
DFT. SCALE: 1:2  
MATERIAL: Aluminum  
QTY: 2  
NOTES: Made From Corona Ring Basis - Part A

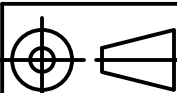





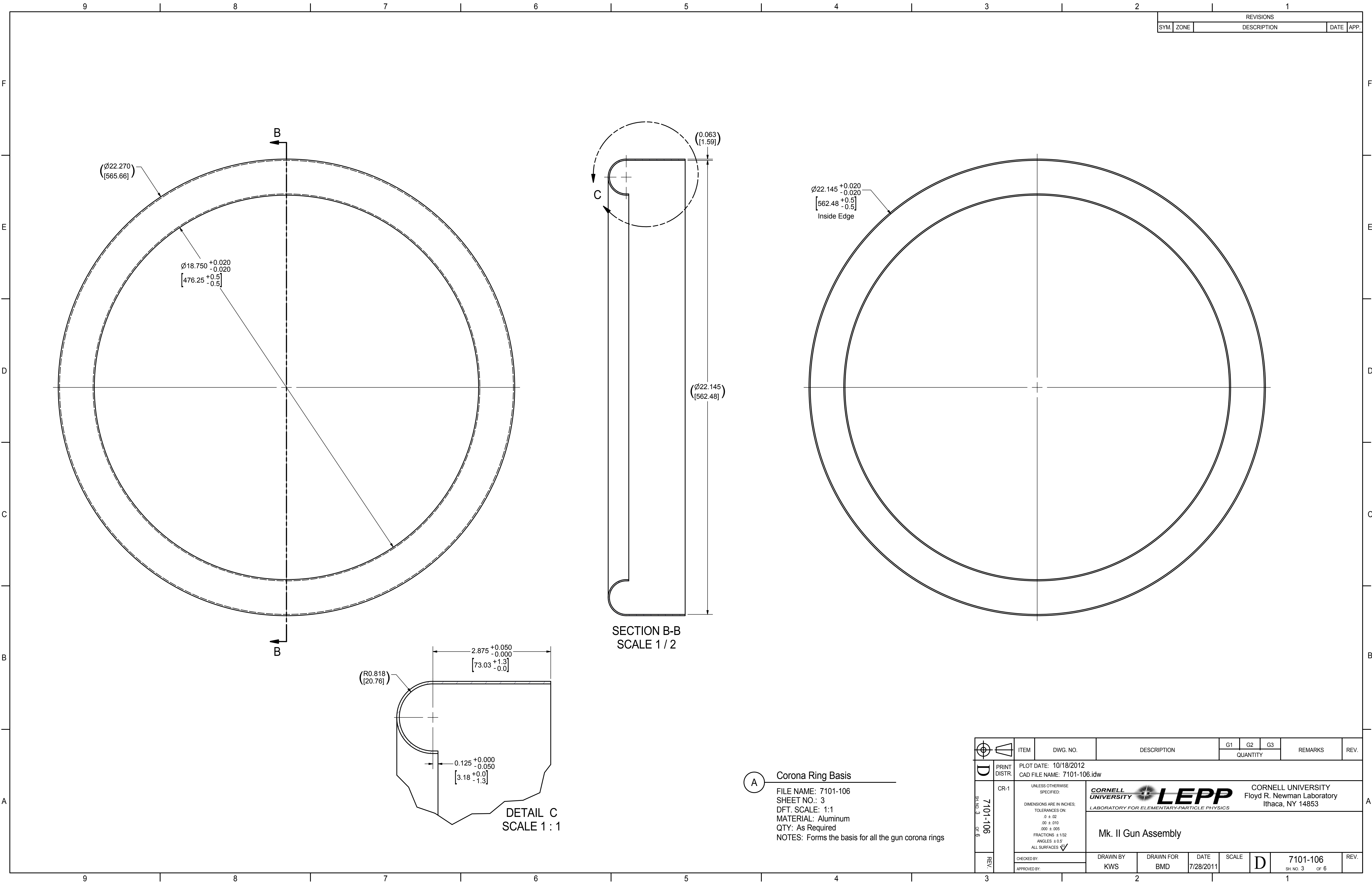
8 Tall Mid Corona Ring  
FILE NAME: 7101-106  
SHEET NO.: 2  
DFT. SCALE: 1:2  
MATERIAL: Aluminum  
QTY: 2  
NOTES: Made From Corona Ring Basis - Part A



7 Short Mid Corona Ring  
FILE NAME: 7101-106  
SHEET NO.: 2  
DFT. SCALE: 1:2  
MATERIAL: Aluminum  
QTY: 2  
NOTES: Made From Corona Ring Basis - Part A



		ITEM	DWG. NO.	DESCRIPTION			G1	G2	G3	REMARKS		REV.	
								QUANTITY					
	PRINT DISTR.	PLOT DATE: 10/18/2012 CAD FILE NAME: 7101-106.idw											
	7101-106 SH. NO. 2 OF 6	CR-1	<div>UNLESS OTHERWISE SPECIFIED:  DIMENSIONS ARE IN INCHES: TOLERANCES ON: Ø ± .02 .000 ± .005 FRACTIONS ± 1/32 ANGLES ± 0.5° ALL SURFACES ✓</div>		<div><div><div>CORNELL UNIVERSITY FLOYD R. NEWMAN LABORATORY ITHACA, NY 14853</div></div><div>Mk. II Gun Assembly</div></div>								
CHECKED BY:		DRAWN BY			DRAWN FOR	DATE	SCALE		7101-106 SH. NO. 2 OF 6	REV.			
APPROVED BY:		KWS			BMD	7/28/2011							



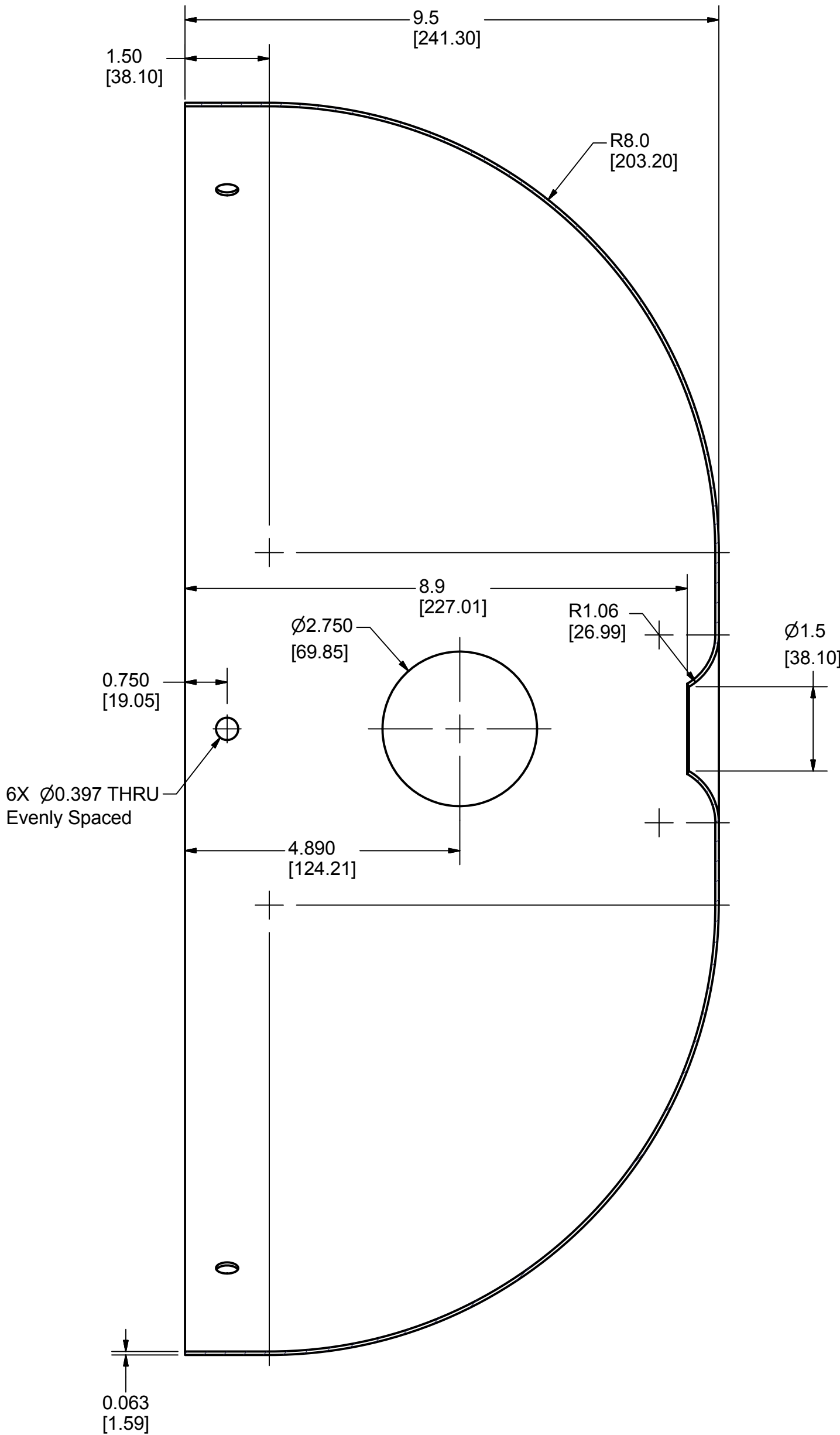
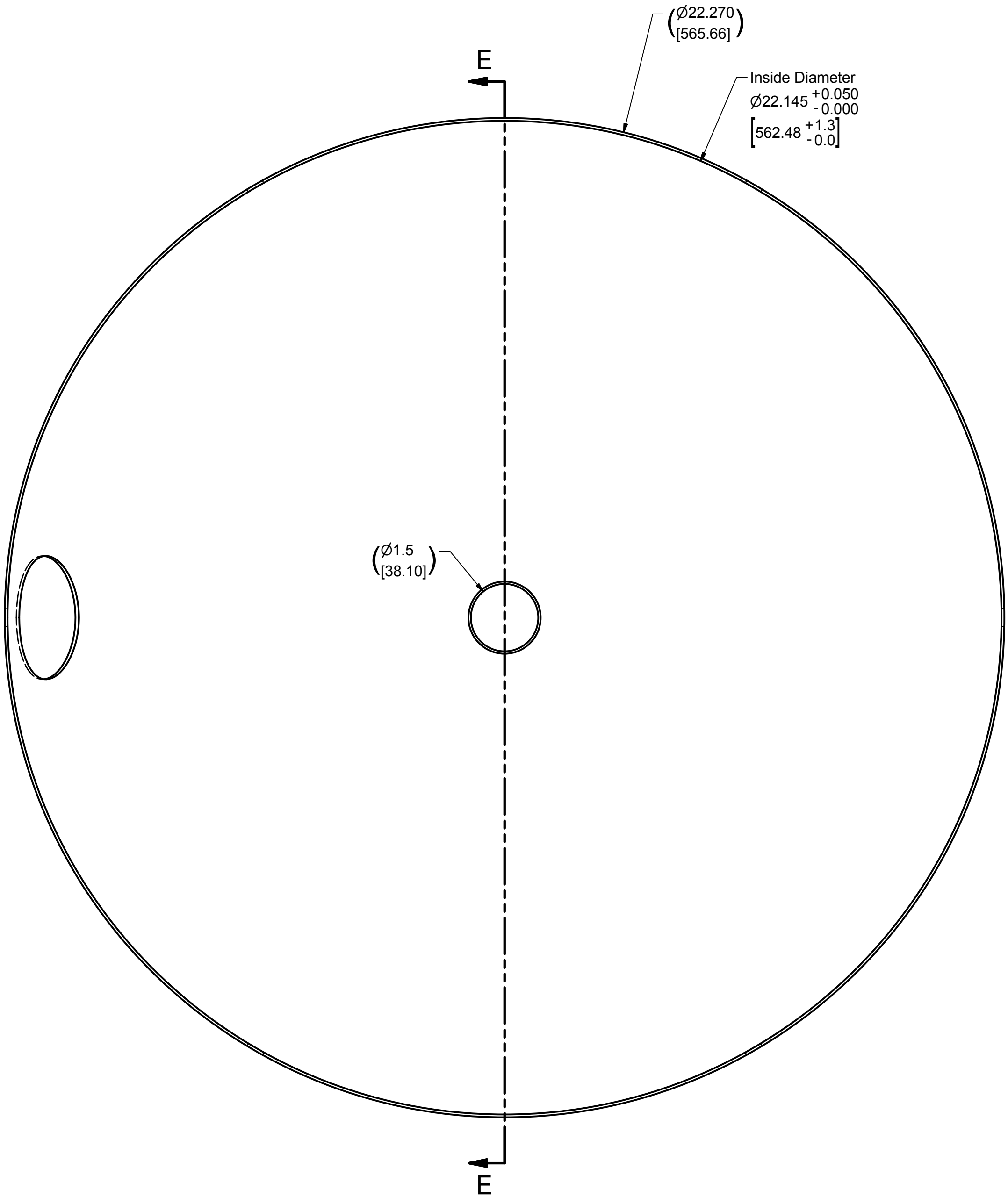
REVISIONS			
SYM.	ZONE	DESCRIPTION	DATE APP.

		ITEM	DWG. NO.	DESCRIPTION			G1	G2	G3	REMARKS		REV.
								QUANTITY				
	PRINT DISTR.	PLOT DATE: 10/18/2012 CAD FILE NAME: 7101-106.idw										
	7101-106 SH NO. 3 OF 6	CR-1	UNLESS OTHERWISE SPECIFIED:		<div><div><div>CORNELL UNIVERSITY</div><div></div><div>LABORATORY FOR ELEMENTARY-PARTICLE PHYSICS</div></div><div>CORNELL UNIVERSITY Floyd R. Newman Laboratory Ithaca, NY 14853</div></div>							
DIMENSIONS ARE IN INCHES:												
TOLERANCES ON:			Mk. II Gun Assembly									
.0 ± .02												
.00 ± .010												
.000 ± .005												
FRACTIONS ± 1/32												
ANGLES ± 0.5°												
ALL SURFACES												
REV.	CHECKED BY:	DRAWN BY		DRAWN FOR		DATE	SCALE		7101-106	REV.		
	APPROVED BY:	KWS		BMD		7/28/2011						
									SH NO. 3 OF 6			

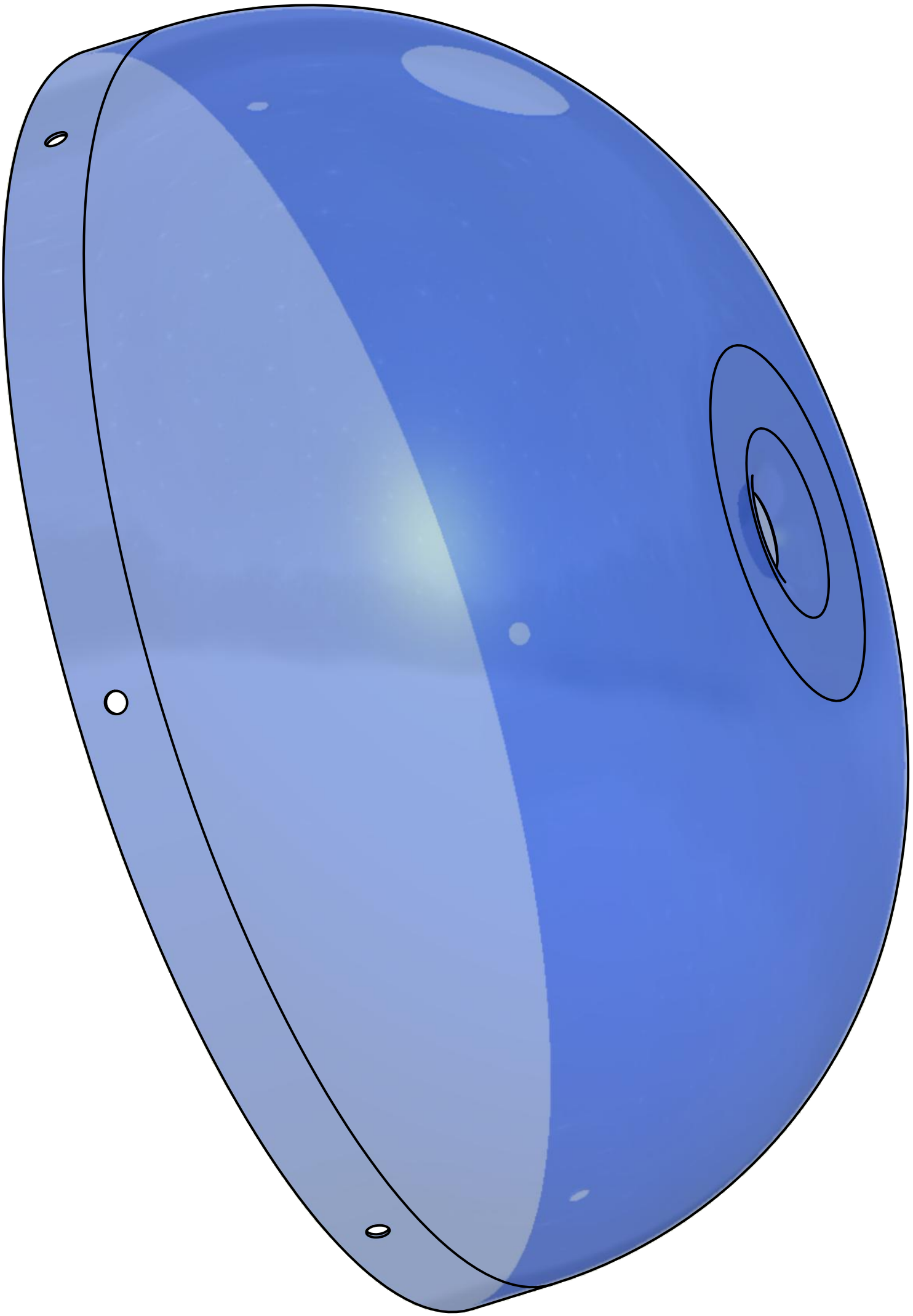
**A** Corona Ring Basis

FILE NAME: 7101-106  
SHEET NO.: 3  
DFT. SCALE: 1:1  
MATERIAL: Aluminum  
QTY: As Required  
NOTES: Forms the basis for all the gun corona rings

REVISIONS				
SYM.	ZONE	DESCRIPTION	DATE	APP.
A	Mult.	Added Resistor Hole to Dome	9/27/12	KWS

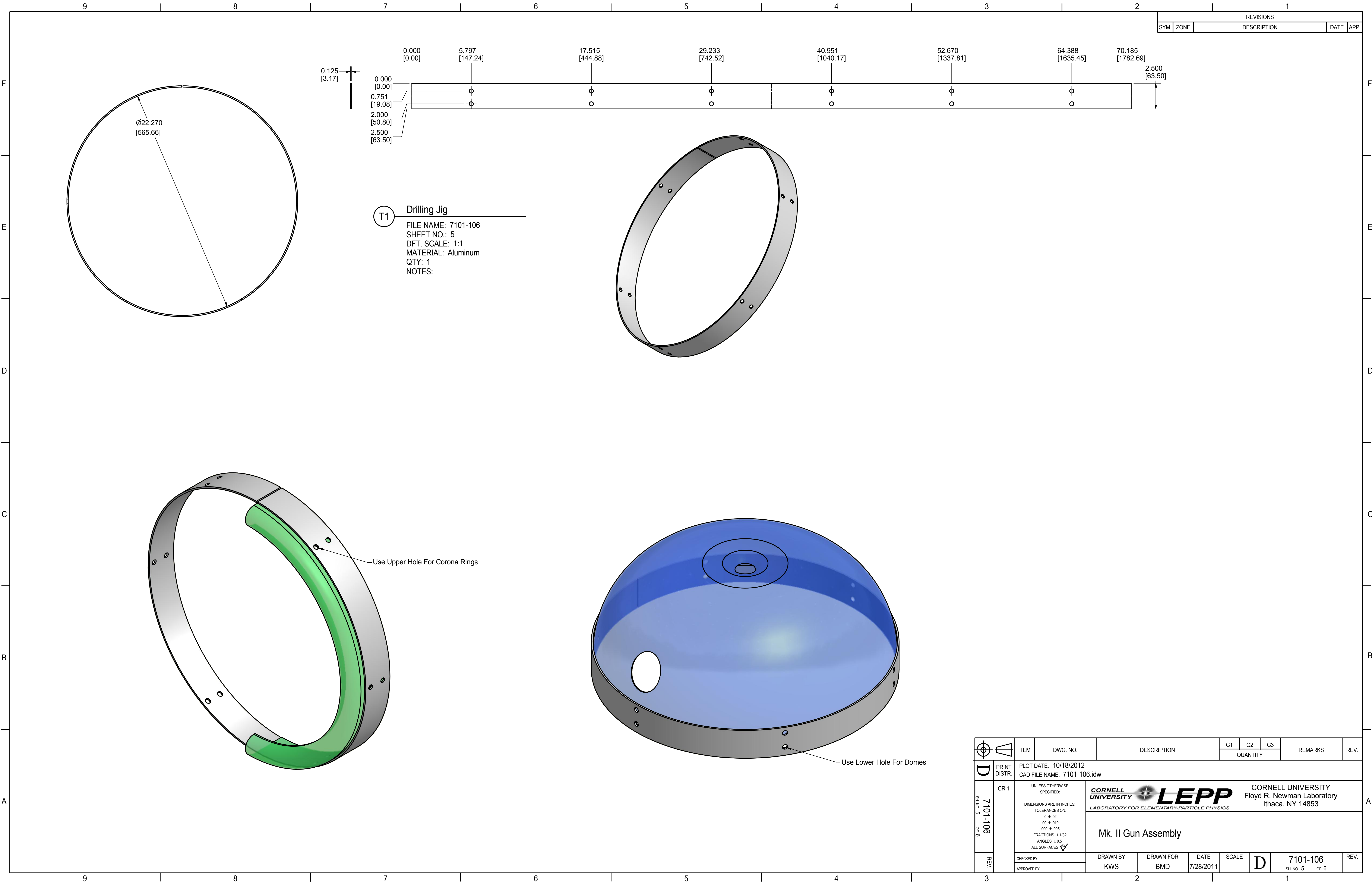


SECTION E-E  
SCALE 1 / 2

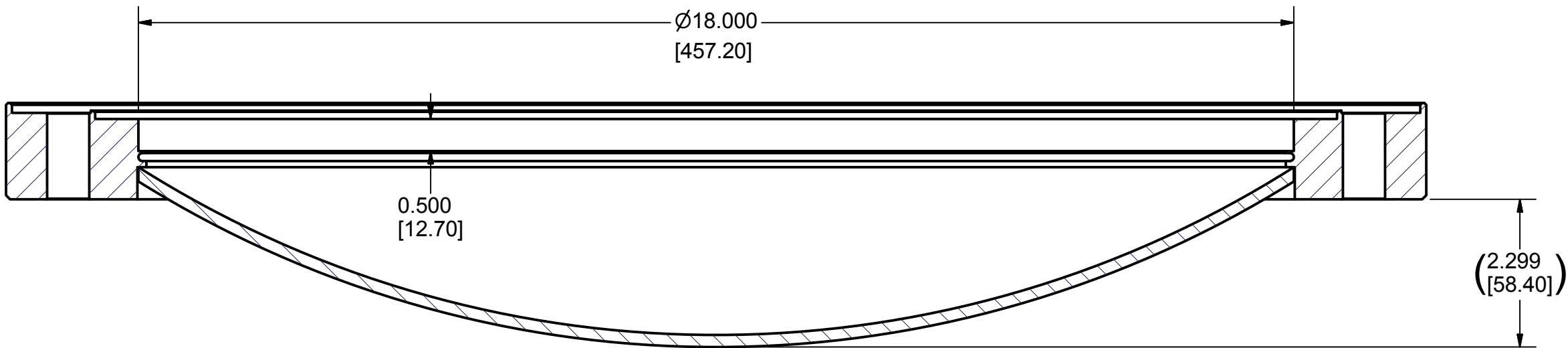
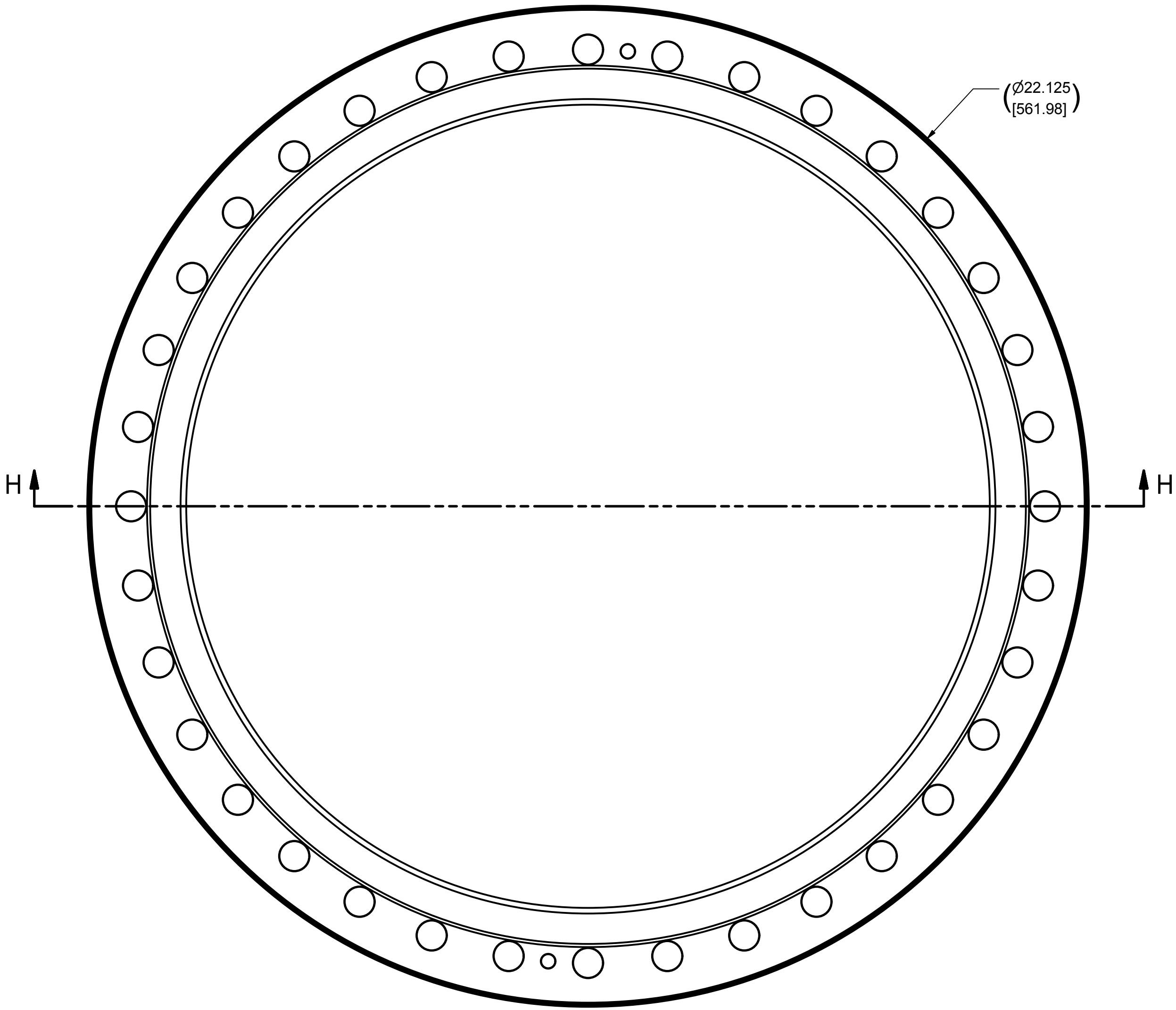


12 Dome Spinning  
FILE NAME: 7101-106  
SHEET NO.: 4  
DFT. SCALE: 1:2  
MATERIAL: Aluminum Any Alloy  
QTY: 1  
NOTES: Holes Drilled After Fitting

		ITEM	DWG. NO.	DESCRIPTION			G1	G2	G3	REMARKS		REV.		
		QUANTITY												
D	PRINT DISTR.	PLOT DATE: 10/18/2012 CAD FILE NAME: 7101-106.idw												
	CR-1	<p>UNLESS OTHERWISE SPECIFIED:</p> <p>DIMENSIONS ARE IN INCHES:</p> <p>TOLERANCES ON:</p> <p>.0 ± .02</p> <p>.00 ± .010</p> <p>.000 ± .005</p> <p>FRACTIONS ± 1/32</p> <p>ANGLES ± 0.5°</p> <p>ALL SURFACES </p>			<p><b>CORNELL UNIVERSITY</b> <b>LEPP</b></p> <p>CORNELL UNIVERSITY Floyd R. Newman Laboratory Ithaca, NY 14853</p> <p><i>LABORATORY FOR ELEMENTARY-PARTICLE PHYSICS</i></p> <p>Mk. II Gun Assembly</p>									
SH NO. 4 OF 6	7101-106	CHECKED BY:		DRAWN BY		DRAWN FOR		DATE		SCALE		D	7101-106	REV.
A	REV.	APPROVED BY:		KWS		BMD		7/28/2011				D	SH NO. 4 OF 6	A

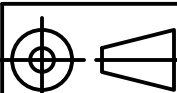






REVISIONS			
SYM.	ZONE	DESCRIPTION	DATE APP.



17 Modifications to Dome

FILE NAME: 7101-106  
SHEET NO.: 6  
DFT. SCALE: 1:2  
MATERIAL: Stainless Steel  
QTY: 1  
NOTES: Modify Existing Part

		ITEM	DWG. NO.	DESCRIPTION			G1	G2	G3	REMARKS		REV.
		QUANTITY										
	PRINT DISTR.	PLOT DATE: 10/17/2012 CAD FILE NAME: 7101-106.idw										
	7101-106 SH. NO. 6 OF 6	CR-1	UNLESS OTHERWISE SPECIFIED:  DIMENSIONS ARE IN INCHES: TOLERANCES ON: .0 ± .02 .00 ± .010 .000 ± .005 FRACTIONS ± 1/32 ANGLES ± 0.5° ALL SURFACES 		 CORNELL UNIVERSITY Floyd R. Newman Laboratory Ithaca, NY 14853							
REV.		CHECKED BY:  APPROVED BY:		DRAWN BY KWS	DRAWN FOR BMD	DATE 7/28/2011	SCALE		7101-106 SH. NO. 6 OF 6		REV.	